



General Information

Mack Sight Flow Indicators provide visual indication of a liquid flowing through a pipeline. A number of designs are available covering the majority of low and medium pressure and temperature conditions met in the processing and chemical fields.

The standard forms and materials of manufacture are illustrated on the following pages. The double window type is fitted with a hinged vane which pivots away from the inlet when liquid is flowing, the position of the vane varying with the rate of flow. They are usually fitted the same diameter as the pipe size and are intended for horizontal or vertical upward flow. The double window see-through design allows effective illumination from behind to facilitate observation in difficult locations or with semi-opaque fluids.

A variation of this type can be supplied with an extended drip lip instead of the hinged vane for use with downward flow in vertical pipelines where there is insufficient liquid to fill the pipe. It gives a stream or droplet flow in the centre of the glass.

We also supply single window sight flow indicators for small volume liquid flows such as in instrument pipelines and for use after steam traps.

Sight Flow Indicators can be supplied in many other materials including the usual stainless steel alloys, monel and austenitic cast iron.

Bodies can be constructed with end connections to user's specifications and a high-pressure range using heavier windows is available.

Sight Flow

D
1

Indicator

Section





Sight Flow Indicator Section

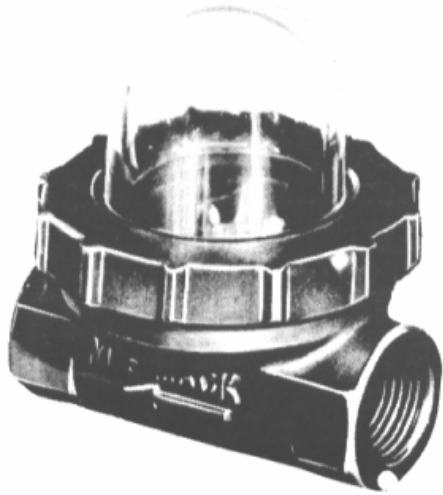
D
2

G.M. Gun Metal **C.I.** Cast Iron (Meehanite)
S.S. Stainless Steel **C.S.** Cast Steel
M.B. Manganese Bronze

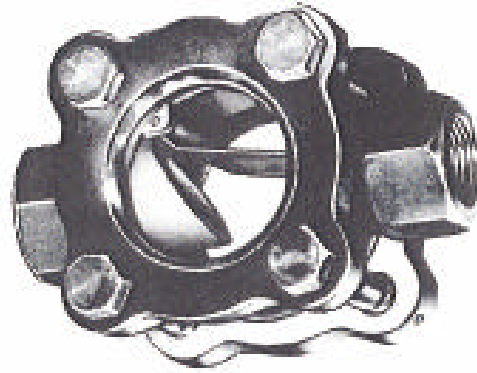
INDEX OF ILLUSTRATED VALVES & EQUIVALENTS IN VARIOUS MATERIALS

SIGHT FLOW INDICATOR	End Connections	Body & Cover	Double Window	Single Window	Flap Indicator	Ball Indicator	Plain	Glass	Horizontal Flow	Vertical Flow Upwards	Max. Operating Pressure & Temperature	Dimensions Page
9272 - GUN METAL (Illustrated Page D3)	B.S.T H	GM	√		√			Armour Plate	√	√	15-80 mm 1035kPa (150psi) 100-300mm 1035kPa (150psi) 200°C (390°F)	D 4
9281 - Equivalent CAST IRON	B.S.T F	CI	√		√			Armour Plate	√	√		
9772 - Equivalent CAST STEEL	B.S.T. H	CS	√		√			Armour Plate	√	√		
9200 - Equivalent STAINLESS STEEL	B.S.T. E	SS	√		√			Armour Plate	√	√		
9278 - GUN METAL (Illustrated Page D3)	Screwed B.S.P Female	GM	√		√			Armour Plate	√	√	15-50mm 1035kPa (150psi) 200°C (390°F)	D 4
9288 - Equivalent CAST IRON	Screwed B.S.P Female	CI	√		√			Armour Plate	√	√		
9778 - Equivalent CAST STEEL	Screwed B.S.P Female	CS	√		√			Armour Plate	√	√		
9208 - Equivalent STAINLESS STEEL	Screwed B.S.P Female	SS	√		√			Armour Plate	√	√		
9418 - GUN METAL (Illustrated Page D3)	Screwed B.S.P Female	GM		√		√		Plastic	√		1035kPa (150psi) 83°C (180°F)	D 4

Sight Flow Indicator Section



No. 9418 15 – 25mm
Screwed B.S.P. Female
Bronze body, plastic dome glass, plastic ball and neoprene gasket.



No. 9278 15 - 50mm
Screwed B.S.P. Female
Bronze body, bolted covers, double window type. Armour plate glass

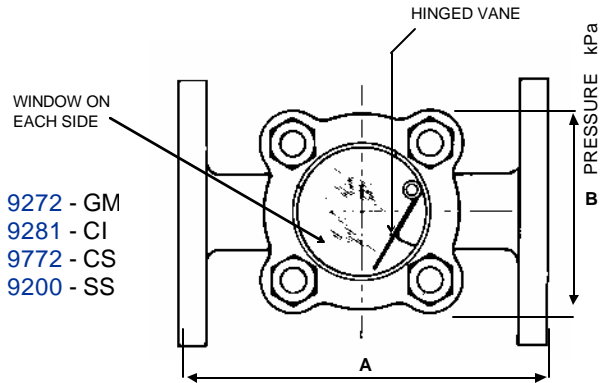
D
3



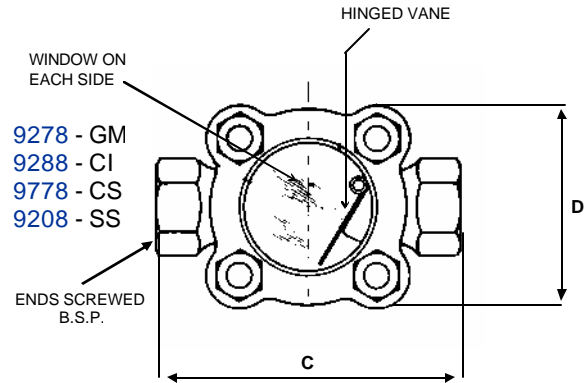
No. 9272 15 - 300mm
Screwed B.S.P. Female
Bronze body, bolted covers, double window type. Armour plate glass.



Sight Flow Indicator Section



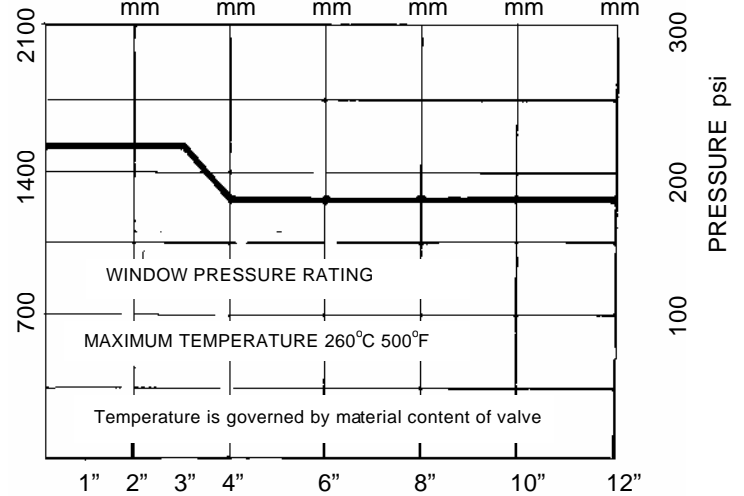
9272 - GM
9281 - CI
9772 - CS
9200 - SS



9278 - GM
9288 - CI
9778 - CS
9208 - SS

DOUBLE WINDOW SERIES INDICATOR SIZE

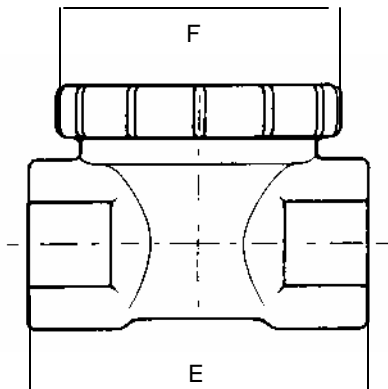
50 100 150 200 250 300
mm mm mm mm mm mm



SIZE	A	B	C	D	Window Dia.
15	160	85	130	85	50
20	160	85	130	85	50
25	178	110	160	110	65
32	170	110	170	110	65
40	170	110	170	110	65
50	230	130	184	130	70
65	238	130	-	-	70
80	250	130	-	-	70
100	300	205	-	-	120
150	320	205	-	-	120
200	394	205	-	-	120
250	419	205	-	-	120
300	432	205	-	-	120

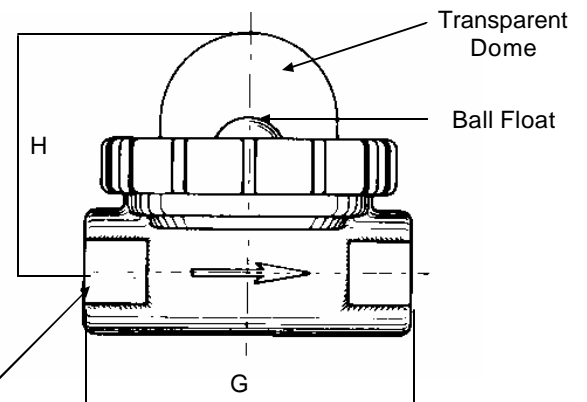
D
4

FIG. 9328
STEAM TRAP SIGHT GLASS



SIZE	E	F
15	85	75
20	85	75
25	90	75

FIG. 9418 DOME TYPE
FOR HORIZONTAL FLOW



SIZE	G	H
15	85	60
20	85	65
25	90	70